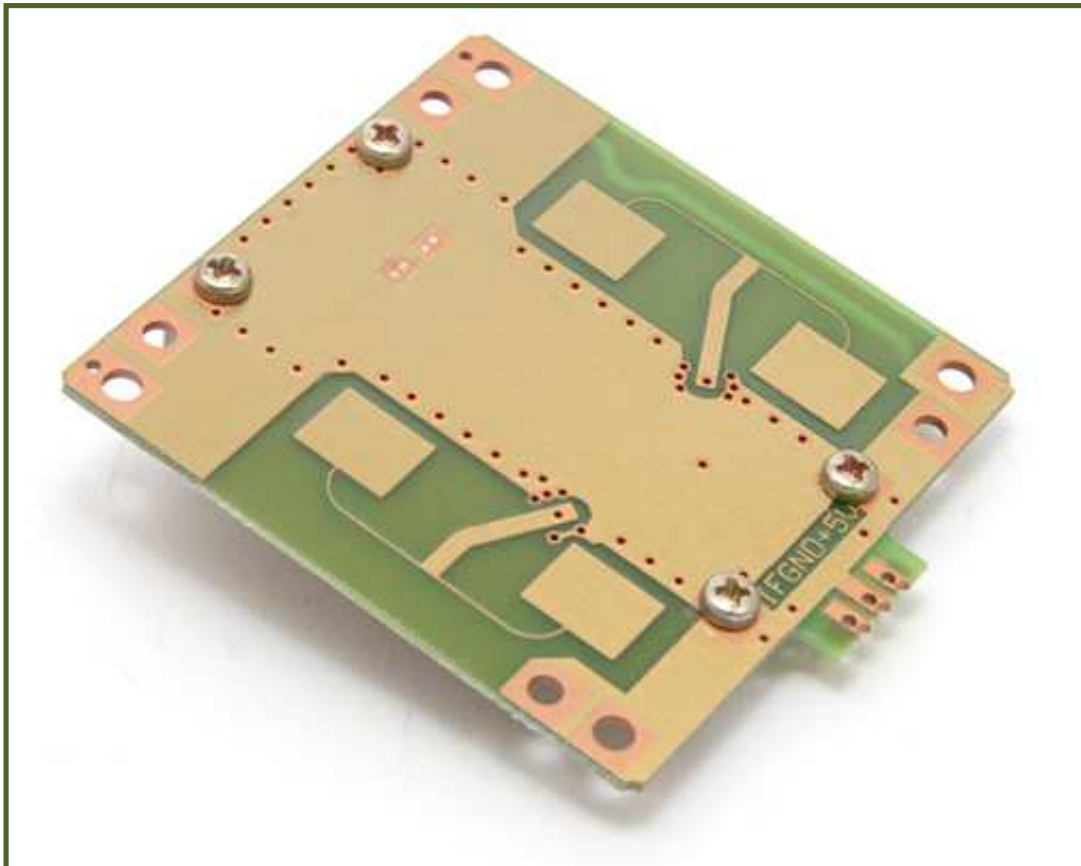


# 10GHz Wireless Moving Detector Rader Module

## NR-XBRM Ver 7.0

Related Products : NR-XBRU(10GHz Wireless Moving Detector Rader Unit)



### 1. 10GHz Wireless Moving Detector Rader Module.

- \* NR-XBRM is a motion detector(receiver/transmitter) module that utilizes super high frequency waves in the band of 10GHz. Unlike existing Infrared Rays sensor(IR), it can detect any motion changes of the inanimate like robots.
- \* NR-XBRM, being able to detect successive motion changes, is a perfect motion detector in an extended area.
- \* NR-XBRM, working on DC 5V, can be availed into battery-run portable detector, and is apt to simple interface circuit composition such as VCC, GND, IF.
- \* NR-XBRM is also for outdoor use, unlike Ir sensor that might malfunction or lead to an inaccurate distinction in a bright area during the day time. It works all-time/all-weather, utilizing 10GHz waves.
- \* NR-XBRM is free from temperature related malfunctioning, working based on waves as military radars do, while IR sensor works based on infrared rays (on human body), thus is unreliable in winter/summer.

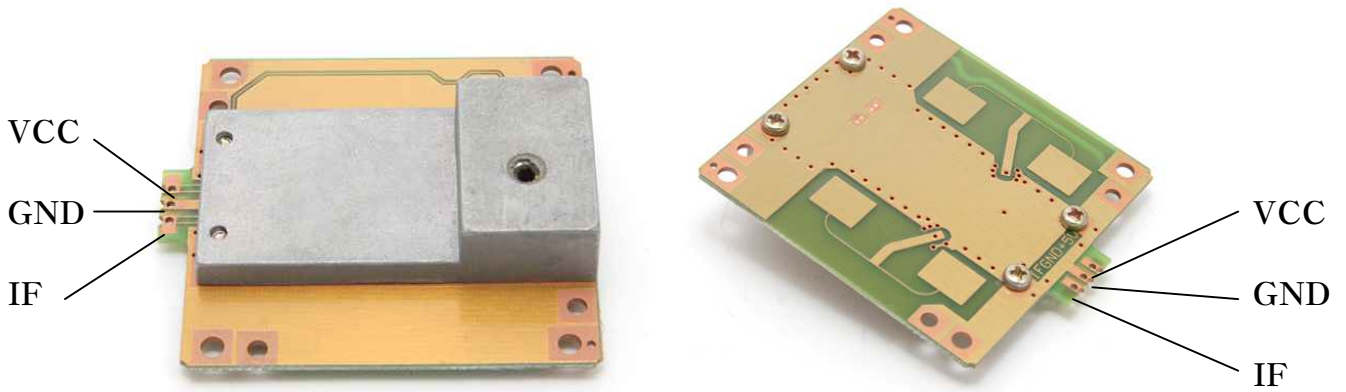
### 2. Features & Applications.

- . Detection of the motions of both human and the inanimate like robots.
- . Suitable for outdoor use, regardless of time/season or night/day.
- . Free from temperature-related malfunctioning.
- . Able to detect successive motion changes in an extended range.
- . Detection of any outdoor moving objects.
- . Detection of inanimate objects' motion

### 3. 10GHz Wireless Moving Detector Rader Module Specification.

Item	Specification
Operation Voltage	DC 5V.
Operation Current	Under 55mA
Frequency	10.525GHz
Second Harmonic	-55dBm(type)
Input Sensitivity	-80dBm(min) Noise : 10mV
Output Level	under 10dBm
Antenna Gain	8 dBm type
V Plane / H Plane	1 70 / 36

**4. 10GHz Wireless Moving Detector Rader Module Description.**

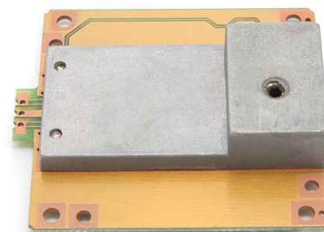
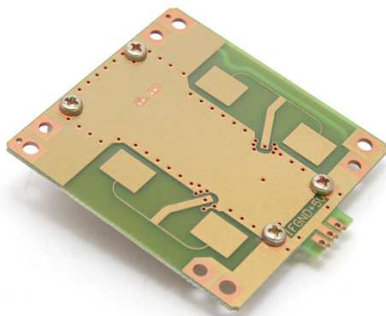


- \* IF : Connect User Control Circuit.
- \* VCC : Input Power DC 5V (+).
- \* GND : Input Power DC 5V (-).

**5. 10GHz Wireless Moving Detector Rader Module Detecting Angle.**

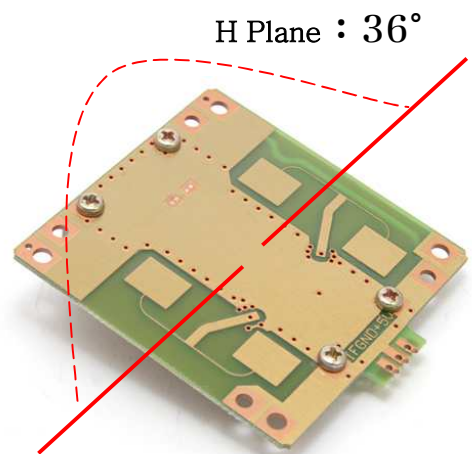
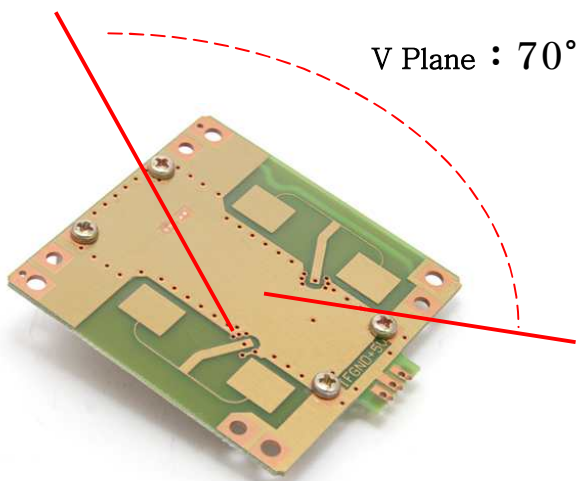
<< Antenna side >>

<< Connecting Control Board side >>

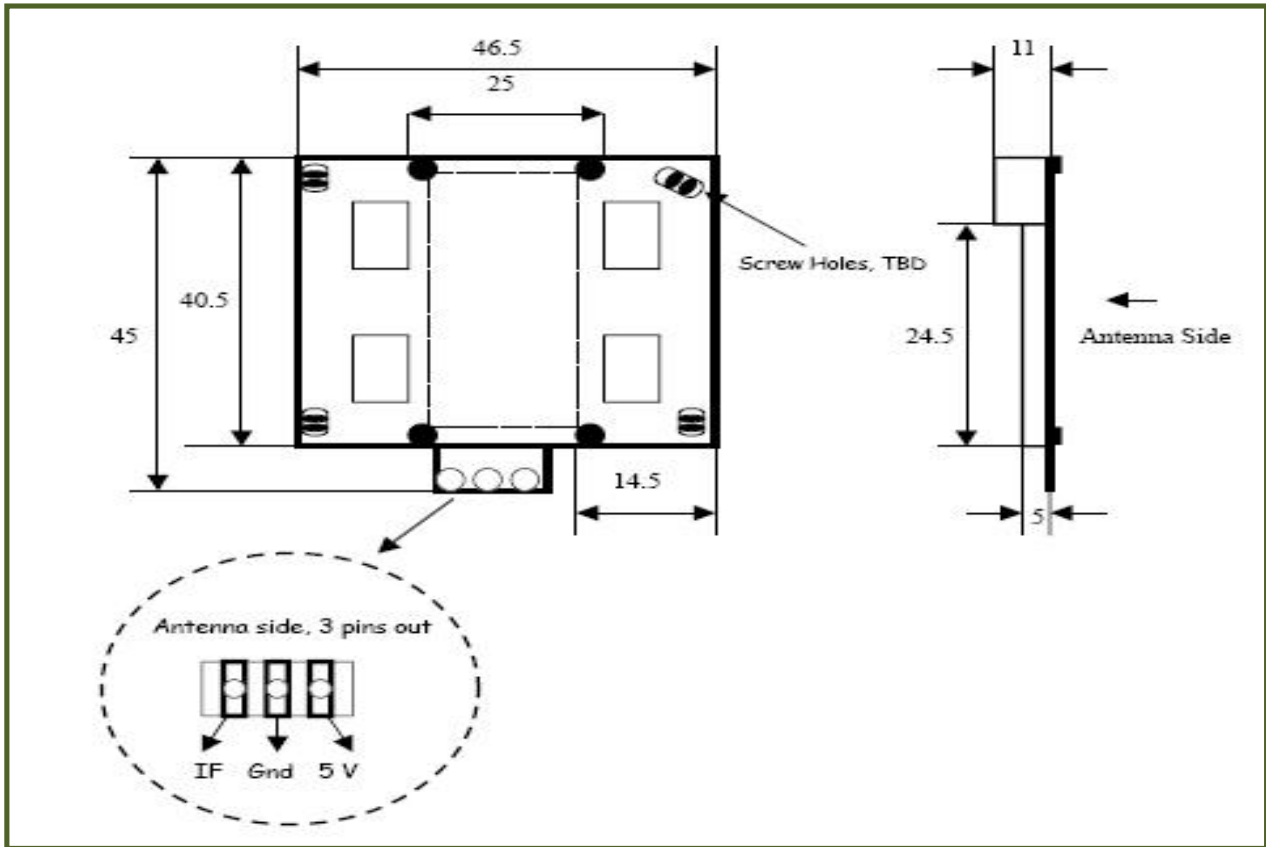


<< V Plane >>

<< H Plane >>



6. 10GHz Wireless Moving Detector Rader Module Size.



**\*\*\*\*\* Caution\*\*\*\*\***

1. Check the features first to connect with other equipment.
2. This circuit is strictly tested.
3. The developer, manufacturer or dealer is not responsible for any malfunctioning/damage caused by connection with other equipment.
4. Appropriate permit /approval is required for some products utilizing this module, depending on functions and usages.

● For more information and inquiry, please refer to the sites below.

R&D : <http://www.neotics.co.kr>

E-Mail : [neotics@neotics.co.kr](mailto:neotics@neotics.co.kr)

Sales : <http://www.logiccamp.co.kr>

E-Mail : [sales@logiccamp.co.kr](mailto:sales@logiccamp.co.kr)